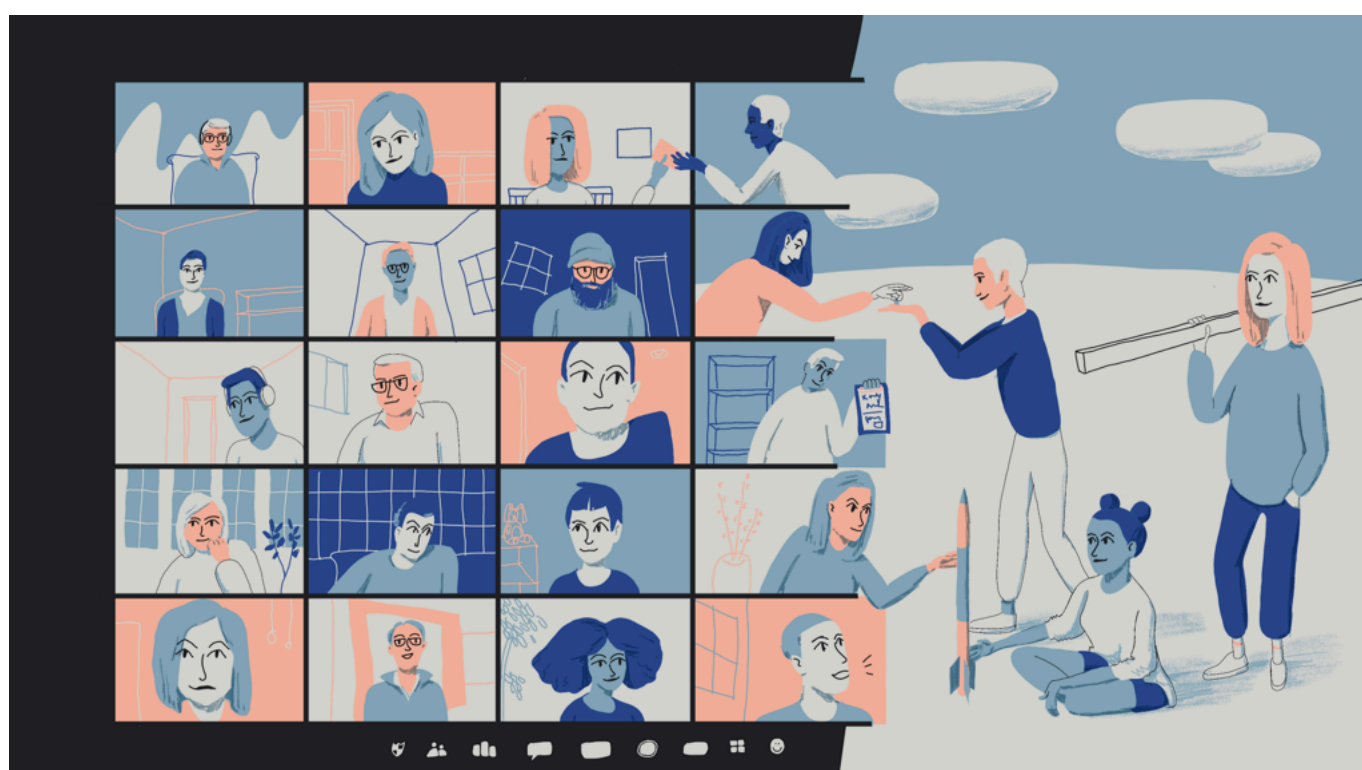




From Gathering to Transformation

Spring 2020 Resources and Initiatives



Thank you for being part of the global *From Gathering to Transformation* community. We will be working on bringing this series back in the fall with the feedback you have provided. During the summer, we will be digging into the findings, and sending out interesting data as it appears. In the meantime, we hope you find these resources helpful and inspiring.

Watch: To view the Finale and all *From Gathering to Transformation* keynote speakers: [Fielding International YouTube Channel](#).

Read: To explore keynote recaps, breakout synthesis, and findings from all *From Gathering to Transformation* summits, visit our blog: <https://www.fieldingintl.com/insight/>.

Tour: *From Gathering to Transformation* Finale [Slide Deck](#).

If you would like access to any further slide decks or breakout room notes, please reach out to me [Nathan Streng](#).

Inquiries: How can we help you? Please reach out to [Randy Fielding](#).

While we look forward to continue this series in the fall, we at [Fielding](#) will be working hard to do our part to improve learning for everyone. We hope to help schools and districts solve problems collaboratively with our integrated team of educators, designers, and architects.

Three exciting new initiatives to join



- 1.) *A New Way Forward* Summit: [Details and registration](#).
- 2.) *This is Our Chance* Film Fest: [Details and registration](#). [#ThisIsOurChance](#)
- 3.) *Just Ask Us* – We need your voice. Contact [Alexis Gwin-Miller](#) or [Masa Uziacanin](#) to learn more.

Let us lead with ONE LOVE,

Nathan Streng, Senior Learning Designer
Fielding International | fieldingintl.com
Designing schools where learners thrive
 Minnesota Studio: 612.200.9159 | Mobile: 320.248.1135
[Minnesota](#) | [Michigan](#) | [Maryland](#) | [Rhode Island](#) | [Singapore](#)

Established in 2003, Fielding International (formerly known as Fielding Nair International) is an award-winning leader in education planning and architectural design. Headquartered in Minneapolis, Minnesota—and with locations in Maryland, Michigan, Rhode Island, and Singapore—Fielding International has provided consulting services to local, regional and national governments, school districts, international schools, and other educational clients around the world. We design school facilities for today and tomorrow with one primary goal in mind—to improve learning.

[View this email in your browser](#)



Copyright ©2020 Fielding International, All rights reserved.

Our mailing address is:
 Fielding International
 Hummingbird Building
 3453 Hennepin Avenue South
 Minneapolis, MN 55408

If you no longer want to receive our newsletter:
[unsubscribe from this list](#)